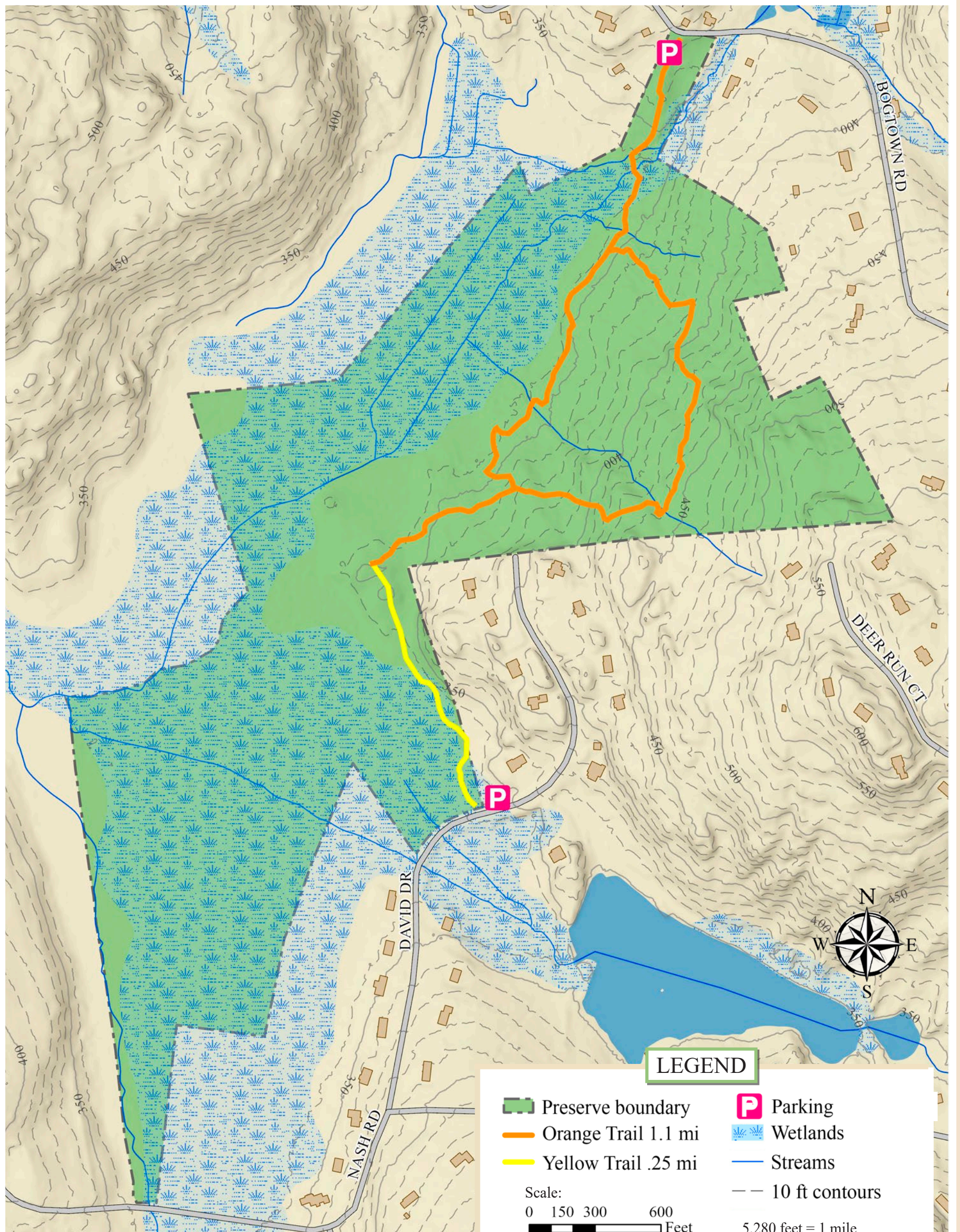




NORTH SALEM
OPEN LAND FOUNDATION

HAWTHORNE-STEMPLER PRESERVE



ENJOY AND PROTECT

Yield to equestrians. | Stay on trails.

NSBTA bridle trails traverse many of our preserves. They extend onto private property and should not be confused with our marked trails.

Dogs must be leashed and under control at all times. No motorized vehicles, mountain biking, camping or hunting.

ABOUT NORTH SALEM OPEN LAND FOUNDATION

The North Salem Open Land Foundation, Inc. is a 501(c)(3) non-profit organization dedicated to preserving the character and natural beauty of the town of North Salem, New York and the area around it by establishing land areas free from exploitation, development, and deterioration and by maintaining the environmental and ecological integrity of the area. **Learn more at nsolf.org.**

